



...engineered to move



Atlas Heavy can transport your cargo anywhere in the USA or around the world with the support of our network of over 260 project focused partners worldwide.

Contact: +1 (713) 993-7640

sales@atlas-heavy.com



...engineered to move

Global Turnkey Services

Global Project Freight Forwarding

Ocean Freight Vessel Chartering

Aircraft Chartering

In-House Engineering and 3D Modeling

Route & Feasibility Studies

Asset Based Heavy Haul Transportation

Asset Based Rigging and Heavy Lift Jack and Slide

In-House Truck Brokerage

Onsite Project Management and Engineering

Machinery & Equipment Moving & Setting



Industry Leading Equipment & Resources



Western Star

3 axle and 4 axle medium and heavy-duty prime movers with planetary gears rated up to 1.1 million pounds



Mack Titans

4 axle medium duty prime movers



Oshkosh

Off-road prime mover



...engineered to move

Industry Leading Equipment & Resources

- PST/SL-E

- 12 lines
- 99,200lbs/line



- THP/SL

- 16 lines
- 99,200lbs/line



- THP/DR-R

- 20 lines
- 52,900lbs/line



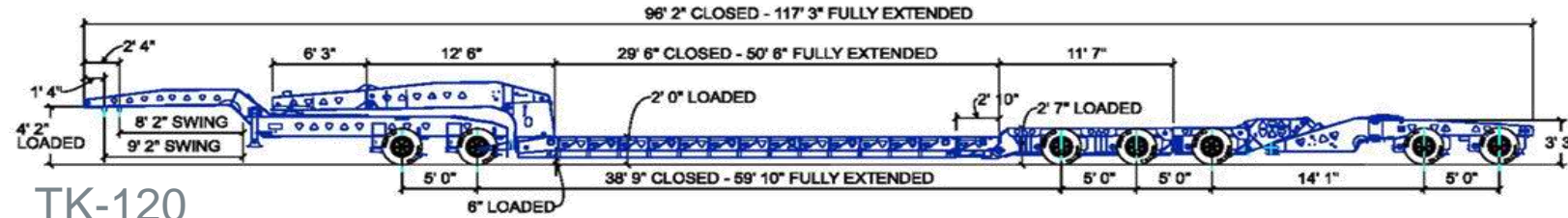
- THP/CA

- 12 lines
- 52,900lbs/line

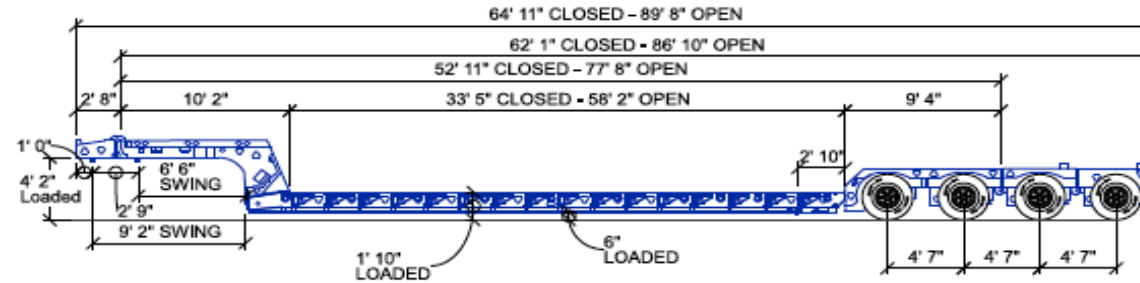


- STZ-H-9 axle

- 26,400lbs/line
- Extendable (75'6" - 100'6")



- 7-axes – 120,000lb max payload – 29'6" – 50'6" extendable deck



- 4-axes – 90,000lbs max payload – 33'5" – 58'2" extendable deck

Additional trailers in our fleet:

- (1) Temisko 13 axle low profile trailer with multiple deck inserts
- (3) 2017 53ft Drop Deck Dorsey Trailers (aluminum)
- (4) Fontaine & Trail King RGN Double Drop Stretch Trailers
- (3) XL Specialized RGN Double Drop Trailers
- (5) Flatbed Trailers ranging in lengths of 48'–53'

Industry Leading Equipment & Resources



- Temisko – 13 axle trailer
- 30-51' of extendable deck
- 147,000 lbs max payload
- Bolstered Jeep and Dolly options
- Jeep and Dolly Hat Boxes

Industry Leading Equipment & Resources



- Hydra-Slide™ System (500-ton capacity)
- African Ekki hardwood jacking timber
- (1) 200-ton Straightpoint load cell (certified)
- (4) 50-ton Straightpoint load cells (certified)
- Steel and aluminum jacking systems (Power Team and Enerpac)



700-ton **LIFT-N-LOCK®** Gantry System



- (73) 42" load stands
- (44) 21" load stands
- (10) 10½" load stands
- (66) 20' steel mats
- 5.5 acres of open yard for space



...engineered to move

Industry Leading Equipment & Resources

- (2) Trail-EZE Low Load Angle Hydraulic Trailer
- Cometto Eco1000 – 4 line
- Versa Lift 60/80 ton
- Versa Lift 25/35 ton
- Taylor 36,000 lbs Forklift
- Sky Trac 12,000 lbs forklift
- Yale 12,000 lbs LP forklift



Advanced Route Surveys – Laser High Pole

Laser High Pole



- Capability to measure objects as small as ¼" diameter at a highway speed of 65 miles per hour and up to 102 feet height with an accuracy of +/- 1".

Advanced Route Surveys – Laser High Pole



- The Laser High Pole system collects the GPS coordinates for each overhead object that is located, noting its height. These are then overlaid onto a map detailing the route and any obstructions and their height.

Engineering & 3D Modeling

Leica 3D Laser

SolidWorks

Load Planning - easyLOAD

Rail Engineering & Load Calculations

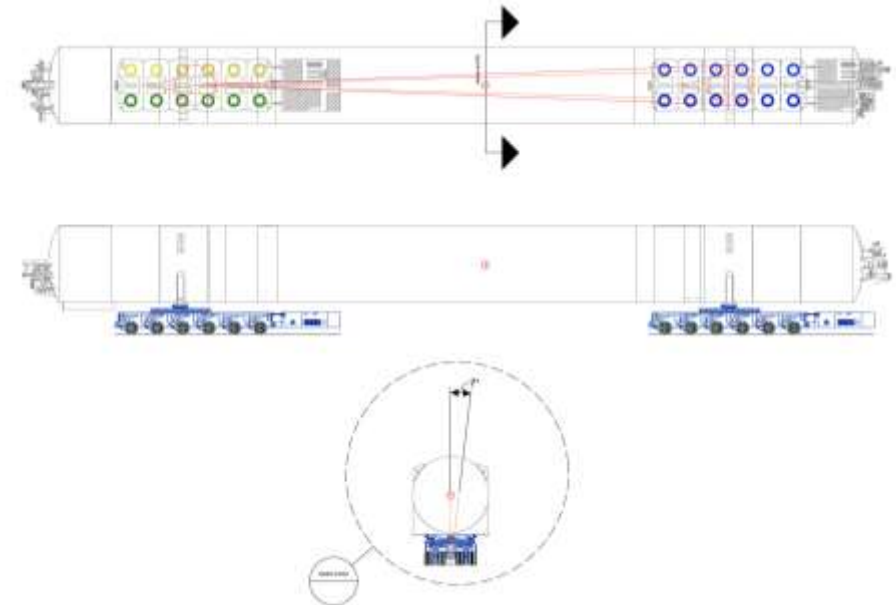


Bentley MicroStation

Route Planning - easyTRACK

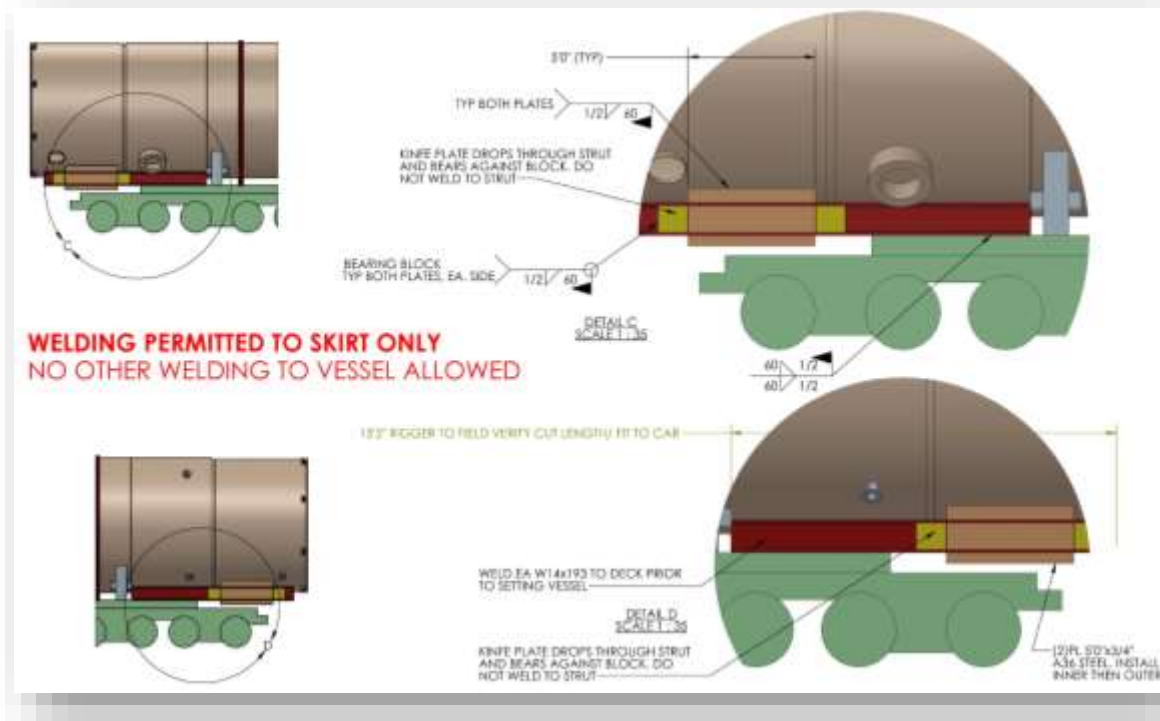
Stability Planning - easyLOAD

Custom Rigging Design & Fabrication



Rail Engineering

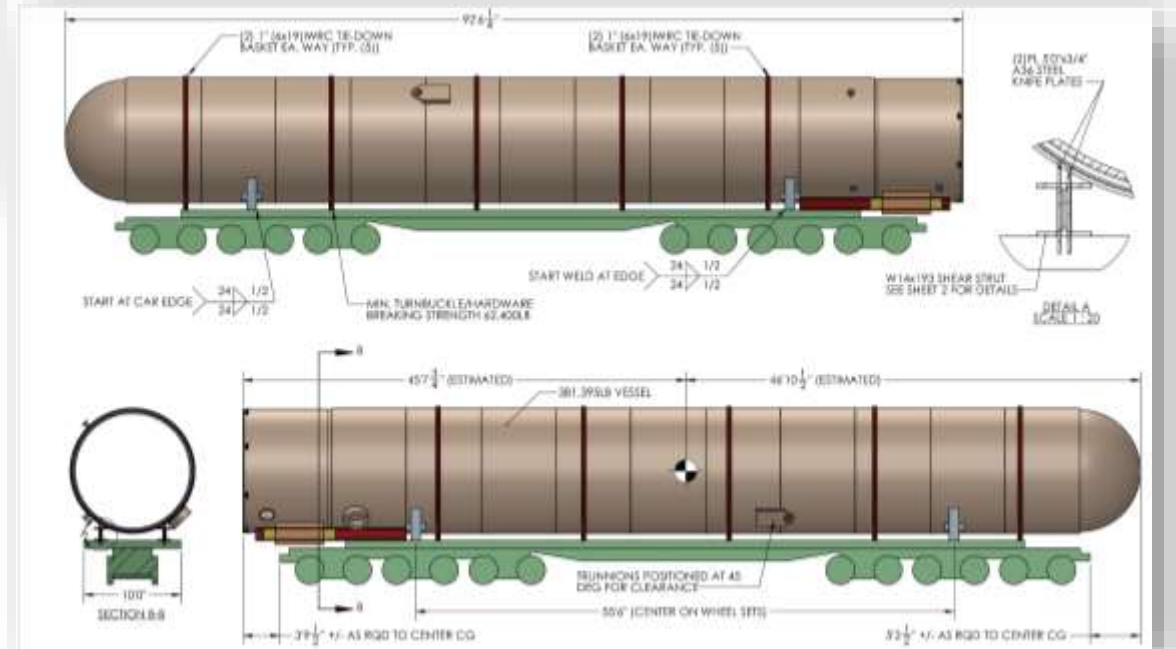
AAR Accelerations + Calc. Standards



Direction of Restraint	G Force to Yield	Equivalent	Total G Force to Yield Including Both Directions
Longitudinal	3.0 Gs or three times the weight at each end of the load	=	6.0 Gs
Lateral	2.0 Gs or two times the weight at each side of the load	=	4.0 Gs
Vertical	2.0 Gs or two times the weight of the load or light weight of the car, whichever is less	=	2.0 Gs or two times the weight of the load or light weight of the car, whichever is less

Restated by Direction of Restraint
Individual directional restraint can be represented by

Longitudinal = 3 G × 2 for each end
Lateral = 2 G × 2 for each side
Vertical = 2 G or light weight of car, whichever is less



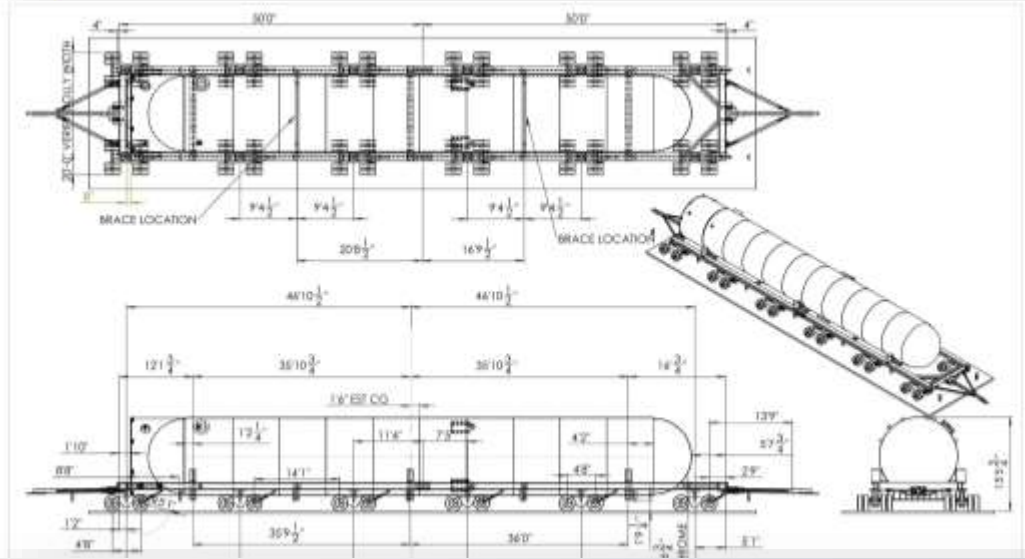
- Unique rail solutions
- Bolster tank load
- Drawings prepared to rail company standards for route study
- Satisfy AAR regulations



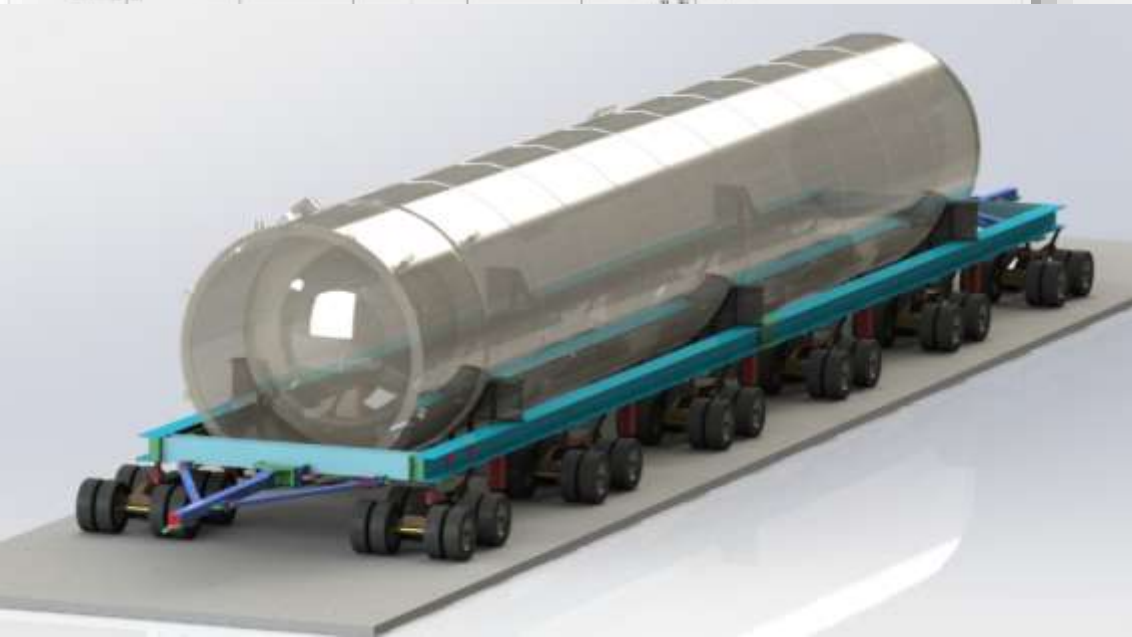
...engineered to move

GOX Tank Move

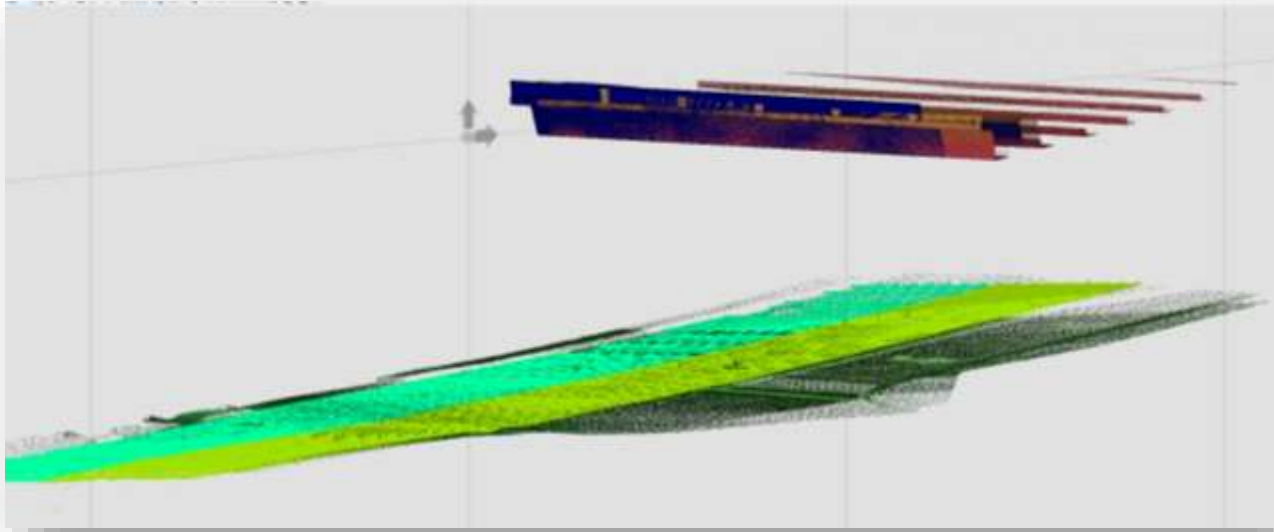
Warren, OH to Seguin, TX



- Custom Designed, Fabricated Beam and Dolly Trailer
- (12) 40-ton Holland Dollies



BOP Stack Move Houston, TX to Baytown, TX



- Route study completed using 3D Scanning
- Custom designed and fabricated tailing device
- Innovative routing solutions allowing 3" of bridge clearance



Transformer Transport and Setting

Shanghai, China to Gail, TX



- Direct discharge to Atlas Heavy Equipment
- Set to pad using 500-ton hydra slide system

Shoreside Crane Transportation and Unloading



Direct discharge to Atlas Heavy Equipment

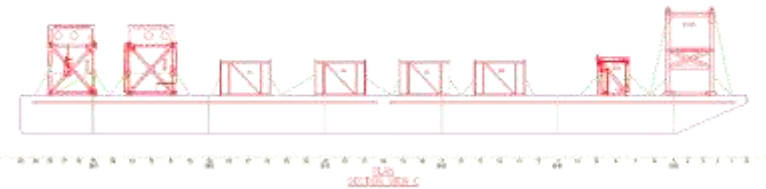
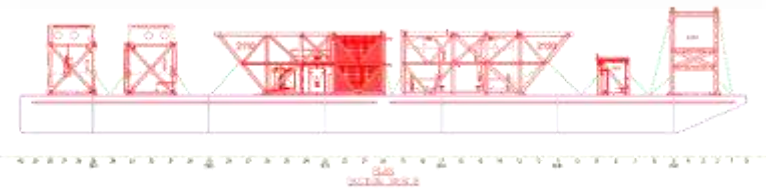
3000 HP Drill Rig Move

Deconstruction and Transportation

- 20 modules 2 – 200 tons each
- Verify weight and COG
- Individual rigging design
- Over the Road transportation
- Inland Barge
- Ocean going OSV



- Weight verified with (4) load cells and COG field calculations done simultaneously during crane lift
- Each sling leg length/angle calculated, capacity determined, custom rigging ordered and tracked within minutes
- Rapid permitting with TxDOT
- Monitor rail, traffic and utility for efficient transport to barge
- Coordinate barge transport, crane operations and loadout to optimize equipment/labor costs



700 ton Gantry



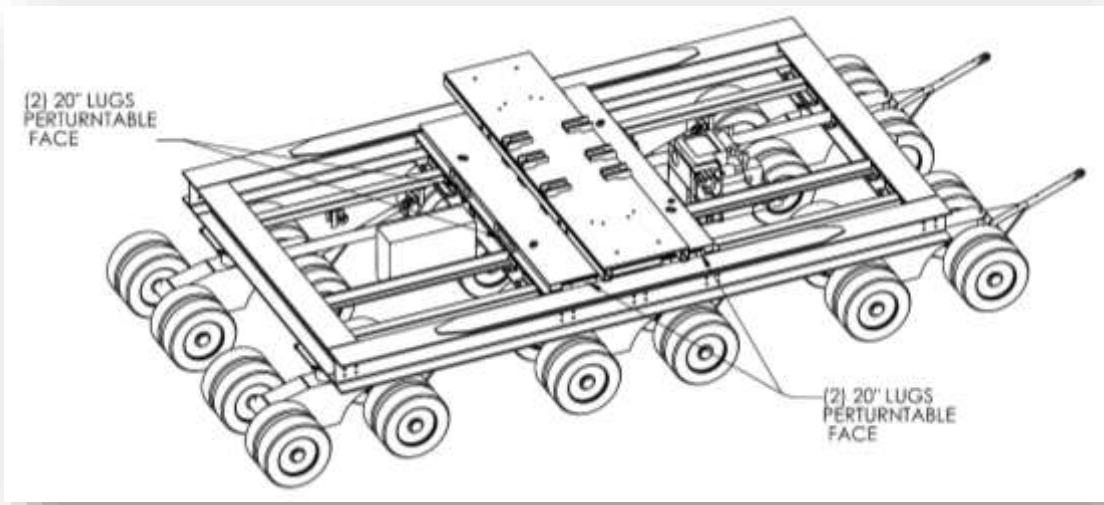
621,240lbs HP Fuel Gas Mixing Drum



378,000lbs Recovery Column

LOX & LNG Tank Transportation

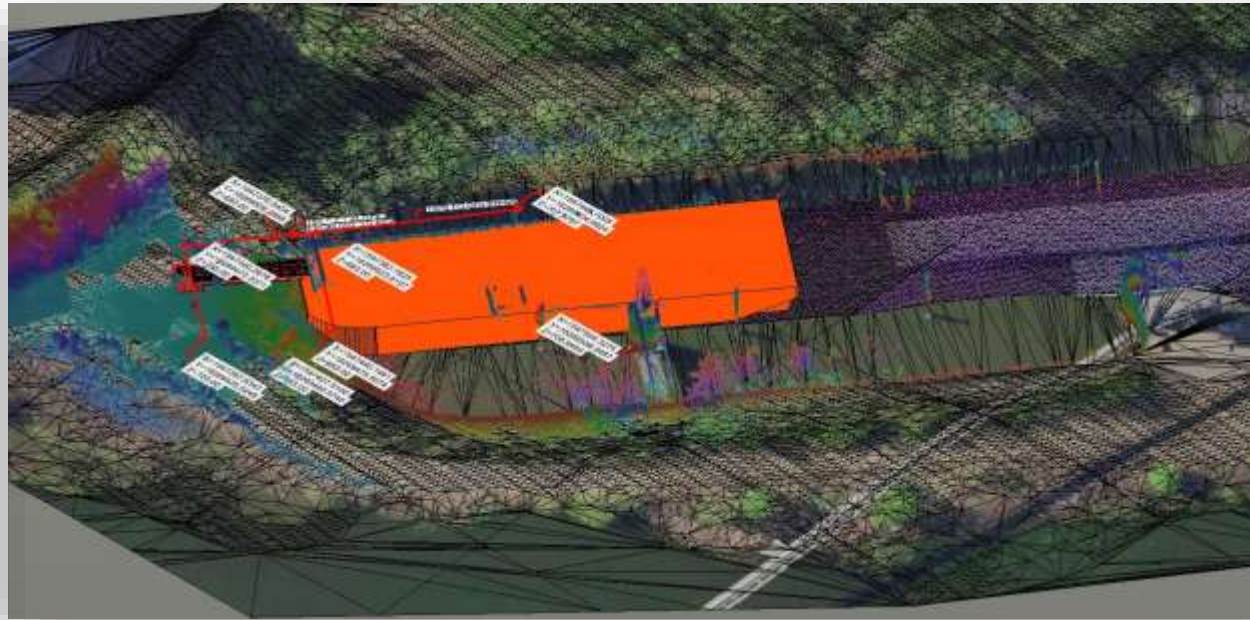
MN to Cape Canaveral, FL



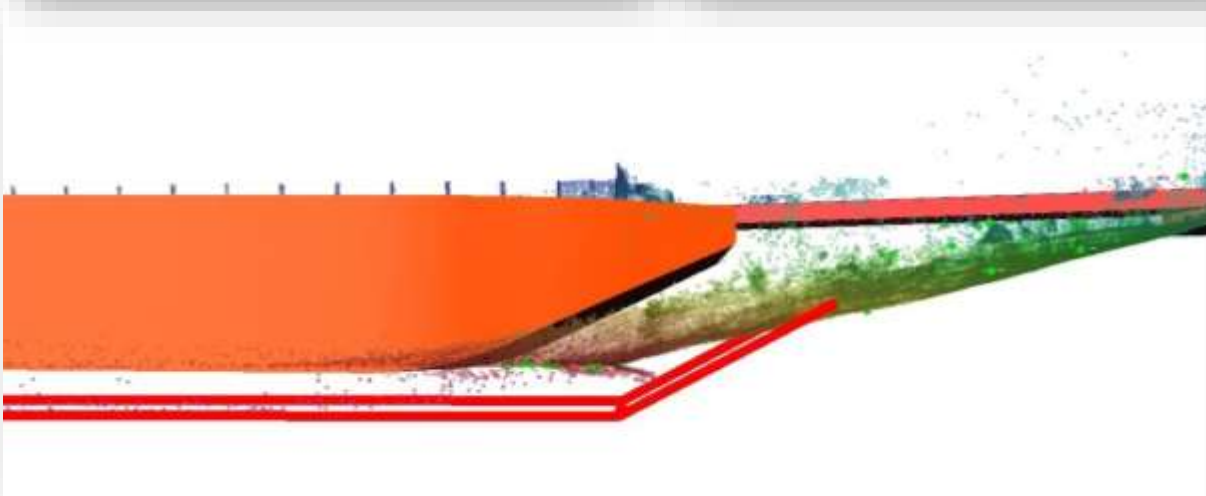
24' LONG SPLIT CONFIGURATON
(USES 2 TRAILERS)

LOX & LNG Tank Preliminary Planning

MN to Cape Canaveral, FL



- Slip Scan and sonar reality modeling
- Transportation stability calculations
- Slip scan imported to sonar for dredging



LOX & LNG Tank Roll On MN to Cape Canaveral, FL

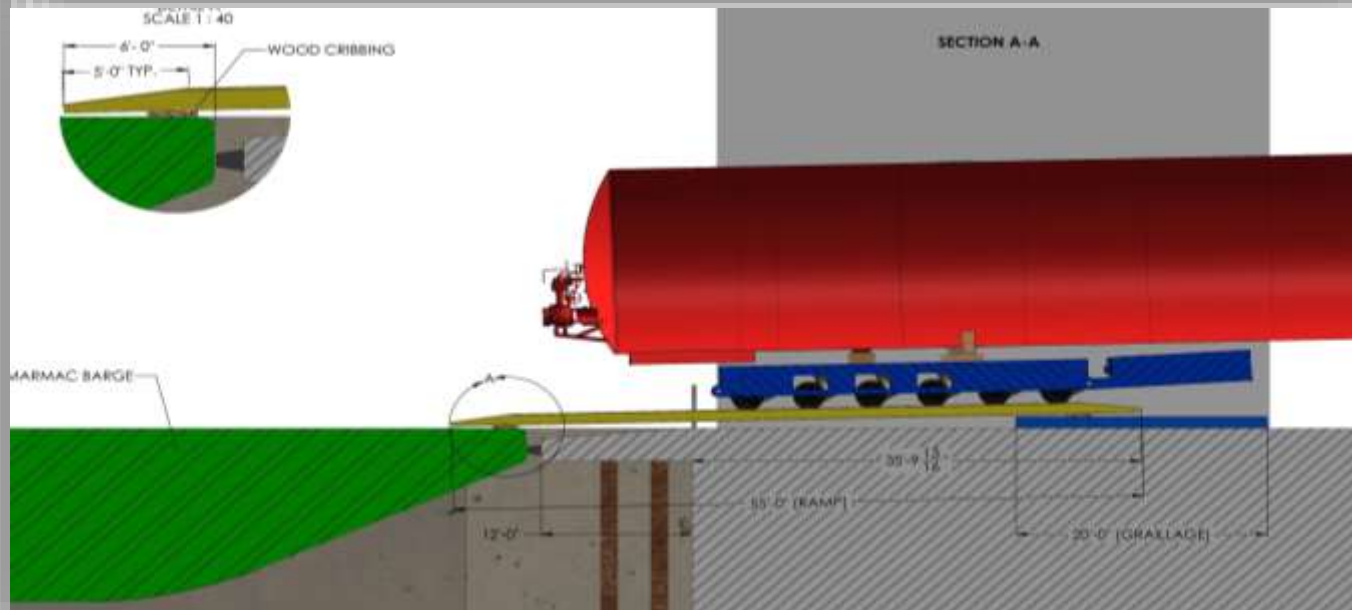
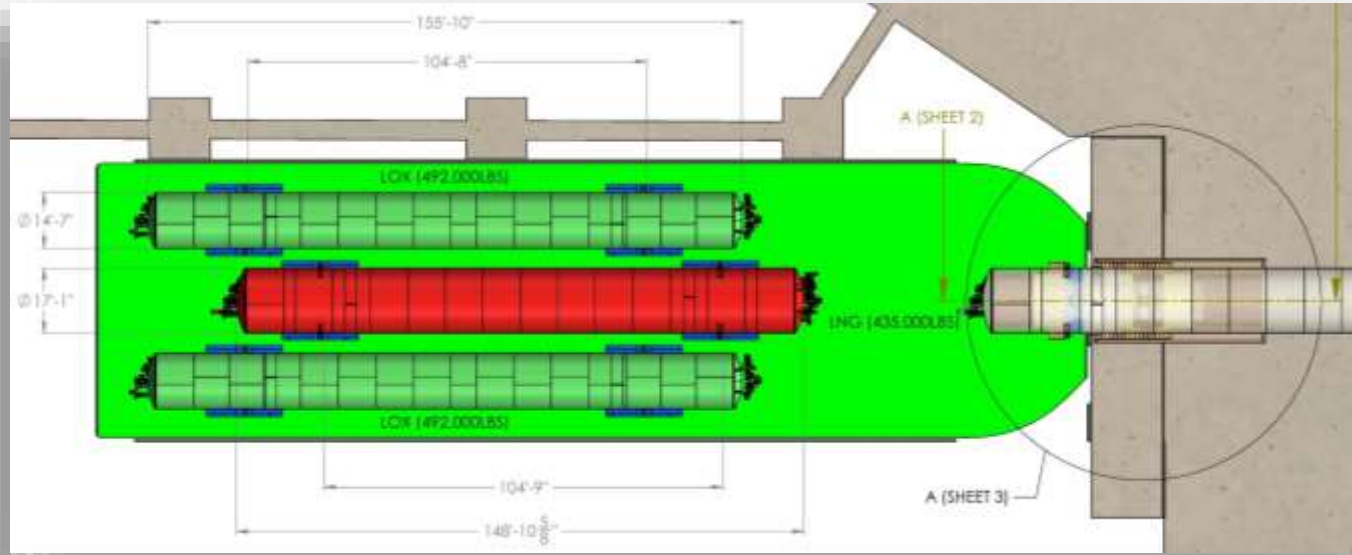
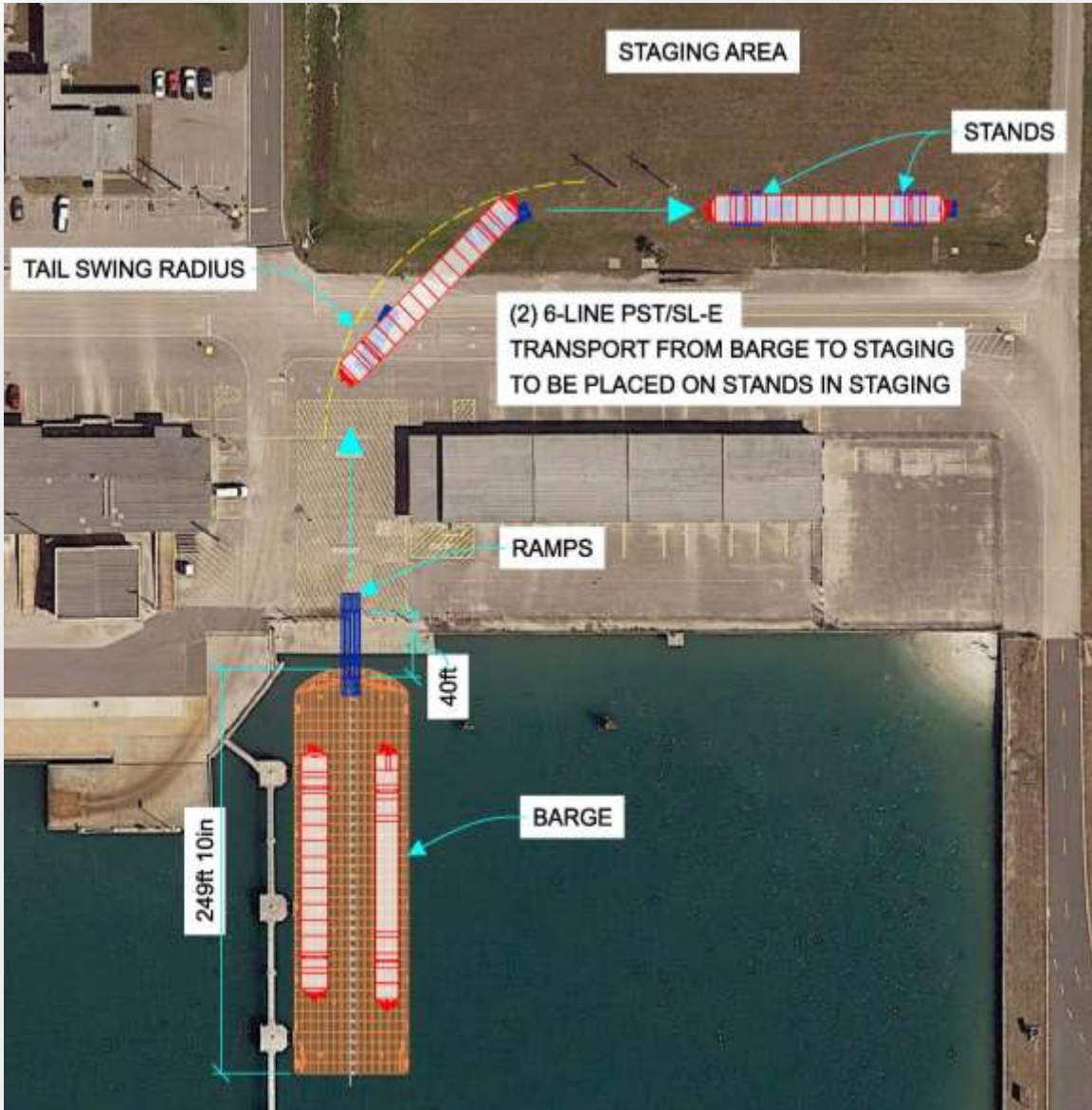


- Cantilever transport & bridge set at barge slip
- Transportation stability calculations



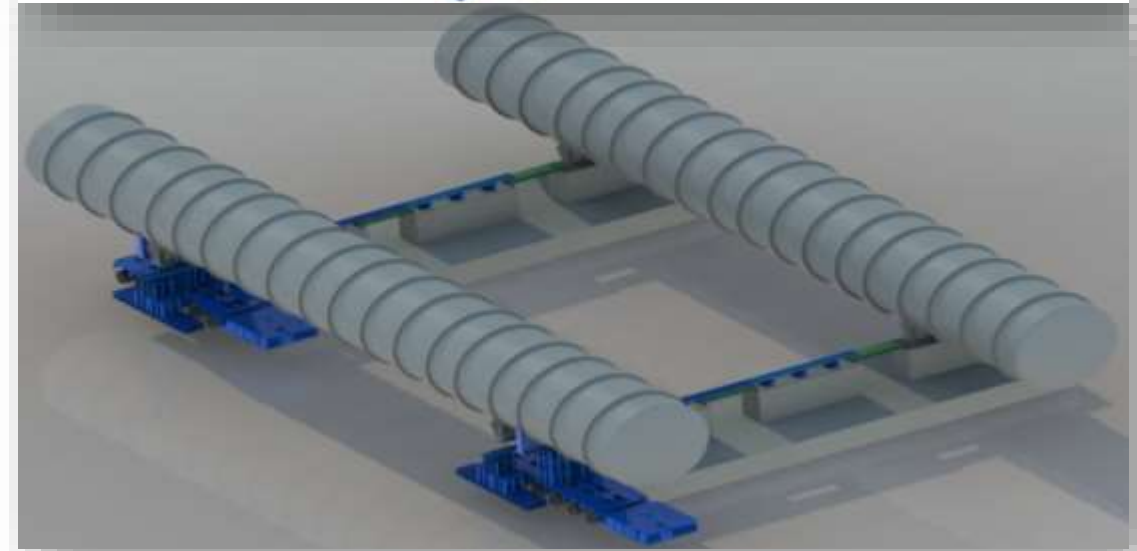
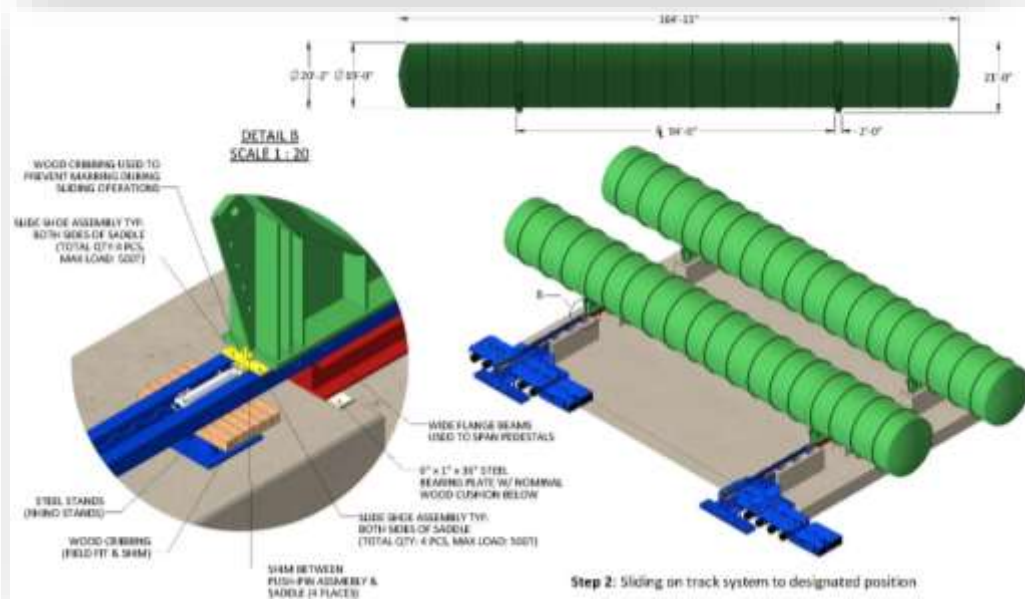
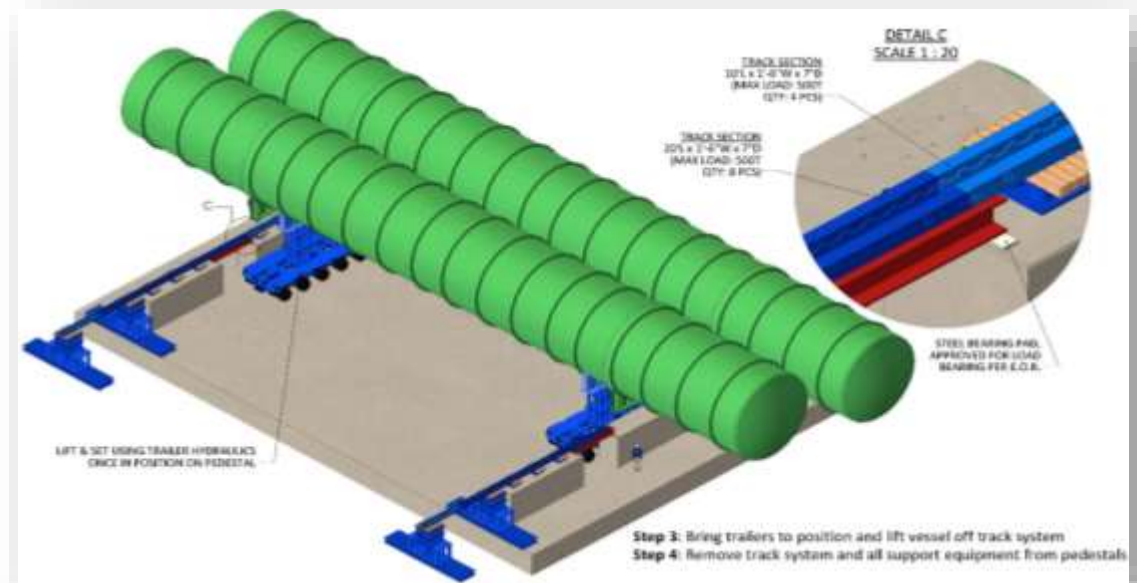
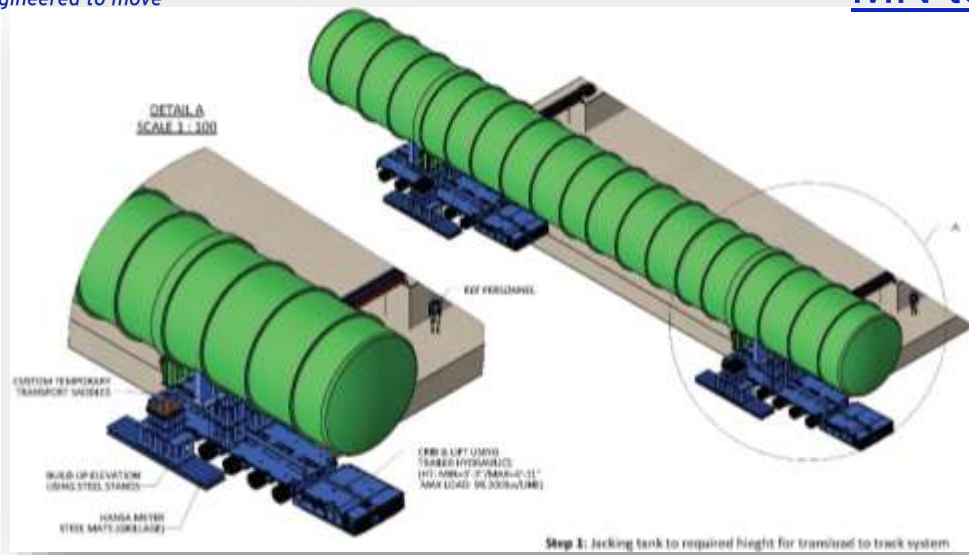
LOX & LNG Tank Roll Off

MN to Cape Canaveral, FL



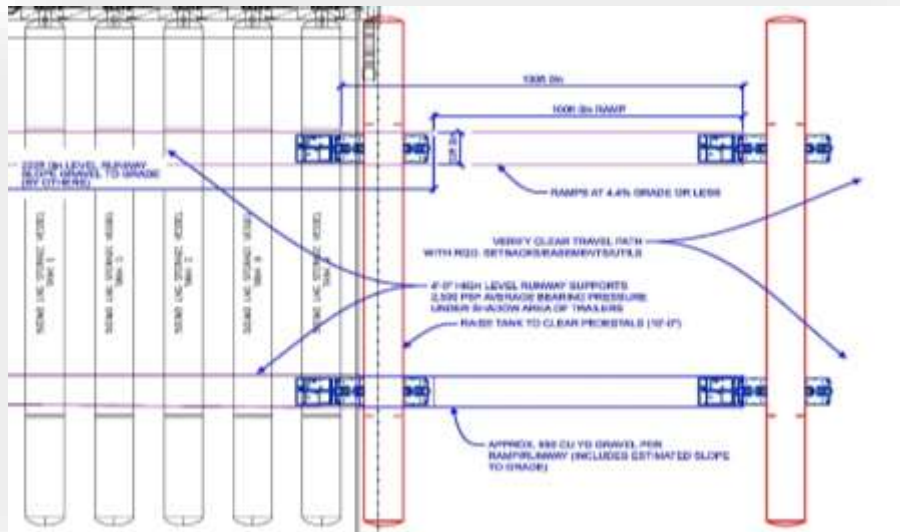
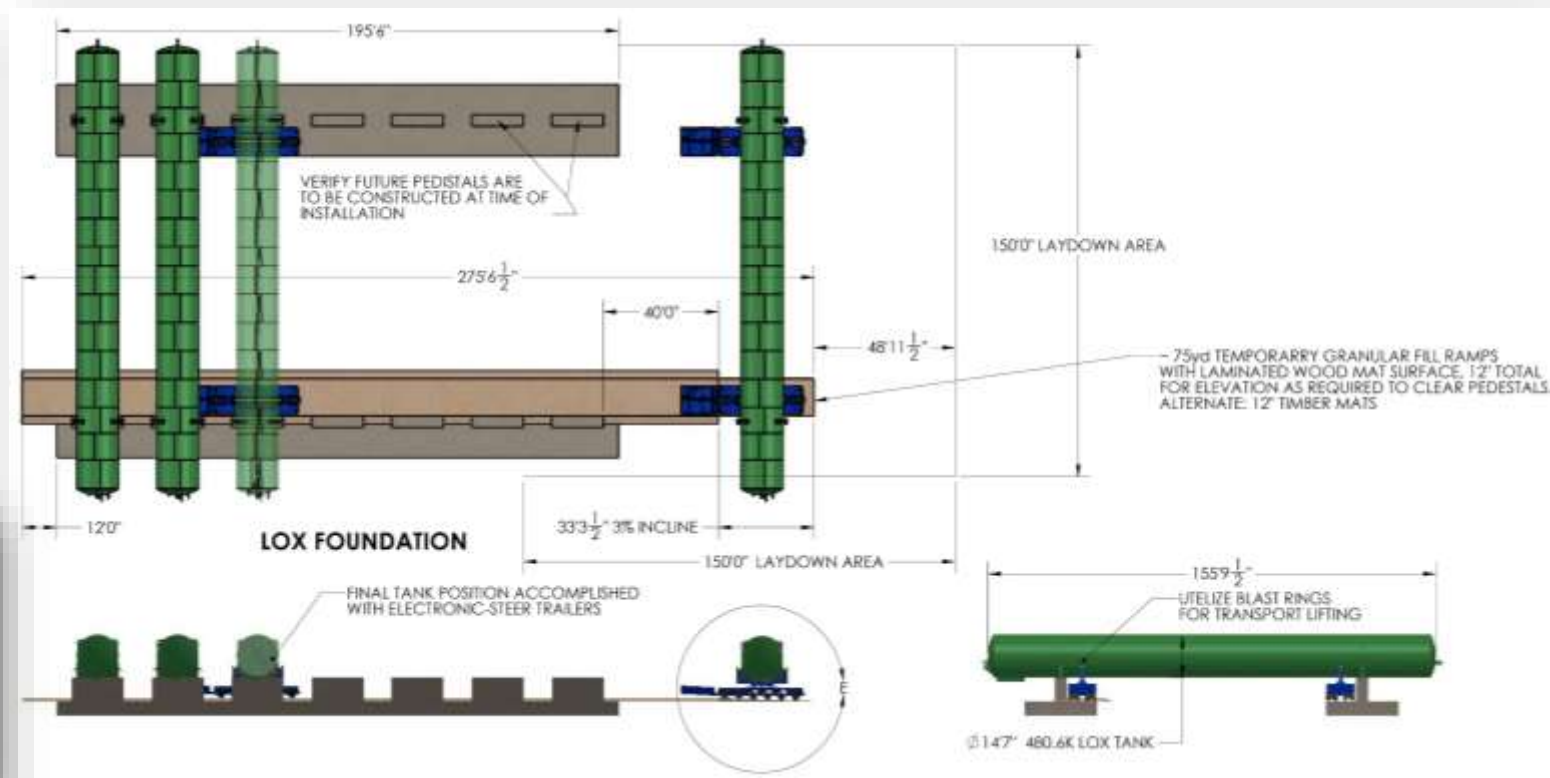
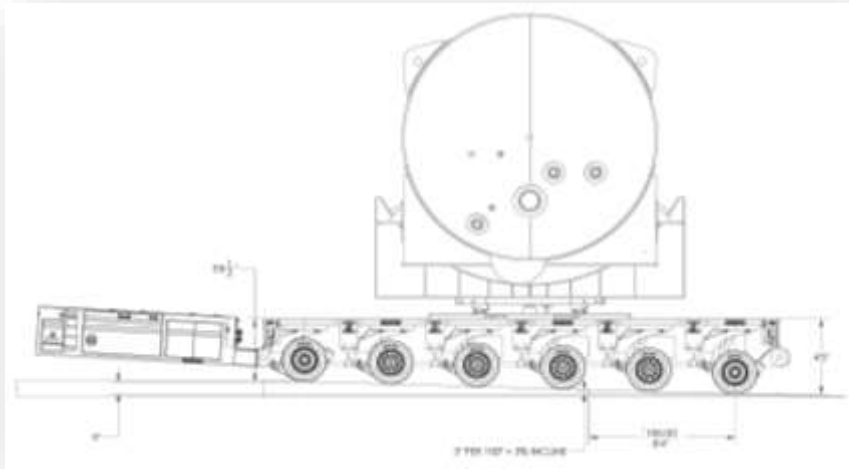
LOX & LNG Tank Roll Off

MN to Cape Canaveral, FL



LOX & LNG Tank Installation

MN to Cape Canaveral, FL



- Preliminary Operations Drawing for Installation
- Detailing Critical Installation & Cargo Dimensions



...engineered to move

Tank Installation



LNG Storage, Loadout & Regas System

Montego Bay, Jamaica



Discharge and staging

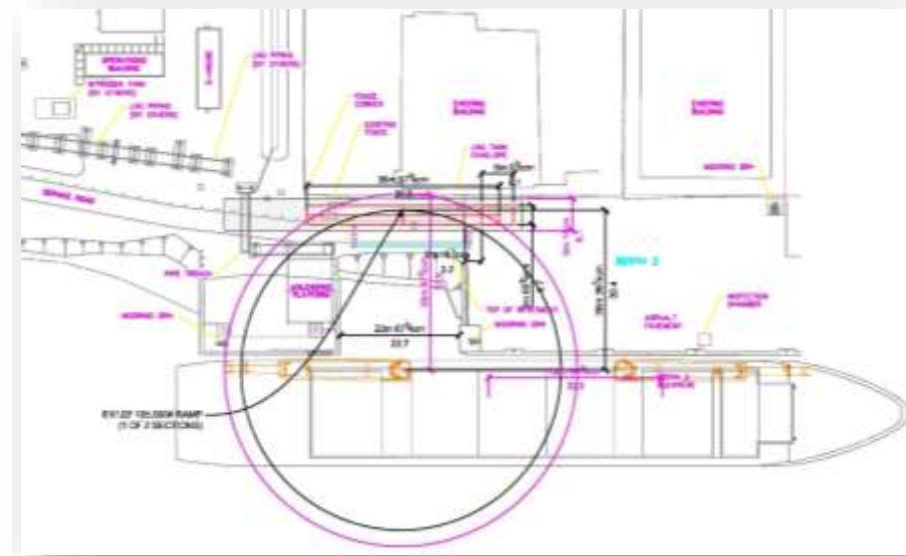




...engineered to move

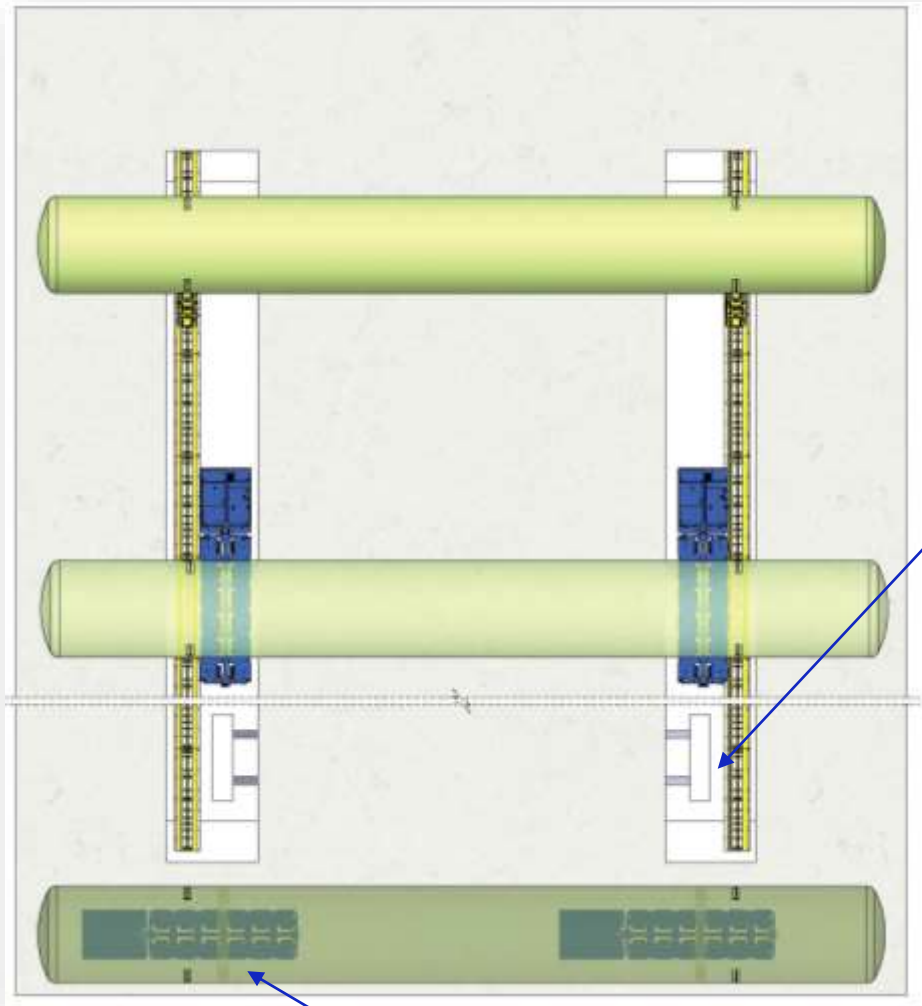
LNG Storage, Loadout & Regas System

Montego Bay, Jamaica



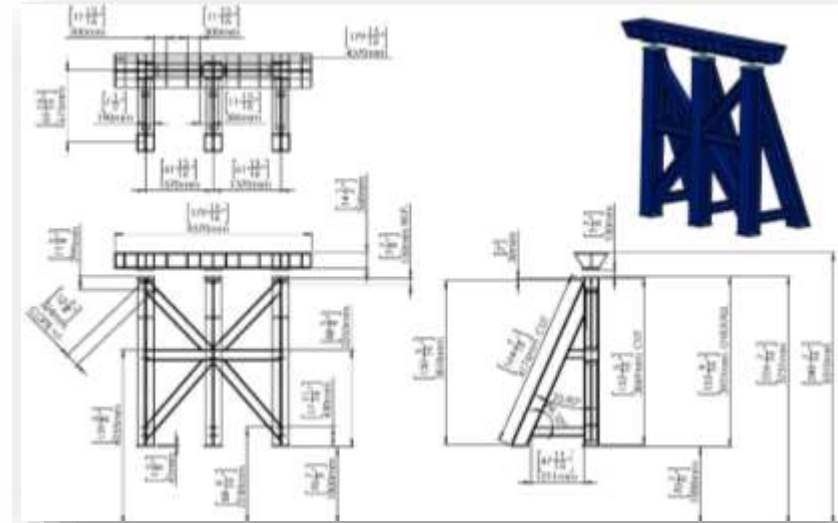
LNG Storage, Loadout & Regas System

Montego Bay, Jamaica



Staged
Pedestals

Carousel Trailers, 90 Deg,
to Perpendicular with Vessel for
Drive-in

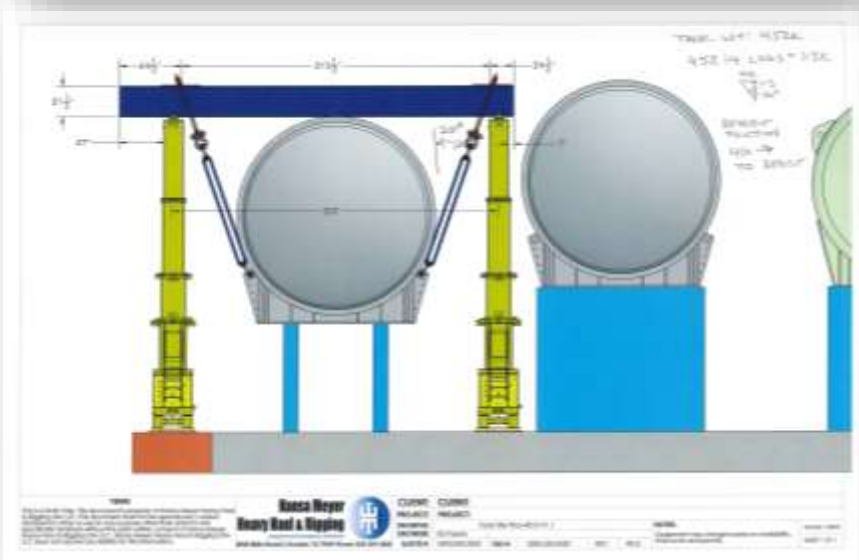
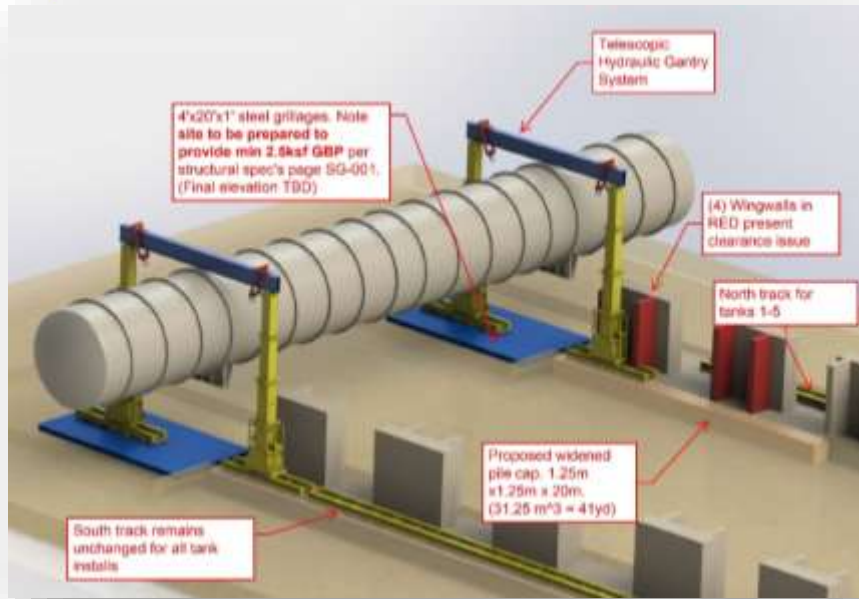


Custom Tank Pedestal Design – Fabrication Drawings

LNG Storage, Loadout & Regas System

Montego Bay, Jamaica

...engineered to move



- Custom rigging designed to ASME BTH-1 Standards
- 3D Site Planning Layout
- Wind Load & Stability Calculations

LNG Storage, Loadout & Regas System

Montego Bay, Jamaica



- PST travel and pick via Gantry



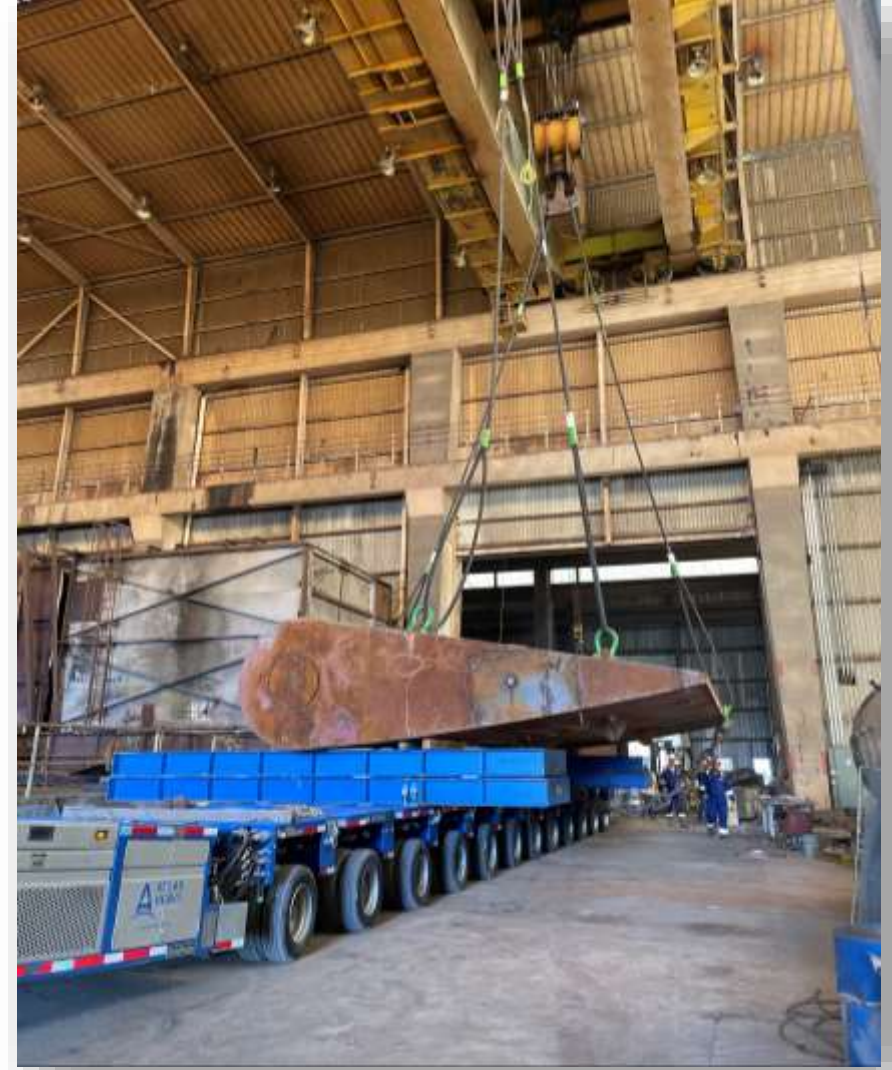
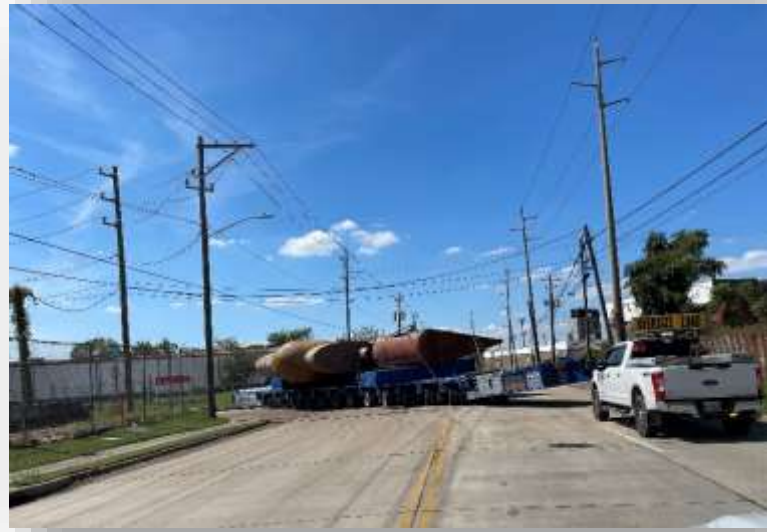
LNG Storage, Loadout & Regas System

Montego Bay, Jamaica



Ships Rudder

Galveston to Houston, TX



O&G Processing Modules

Houston, TX to Dos Bocas, MX



Press Installation and Rigging

Belding, MI





...engineered to move

Press Installation and Rigging

Belding, MI



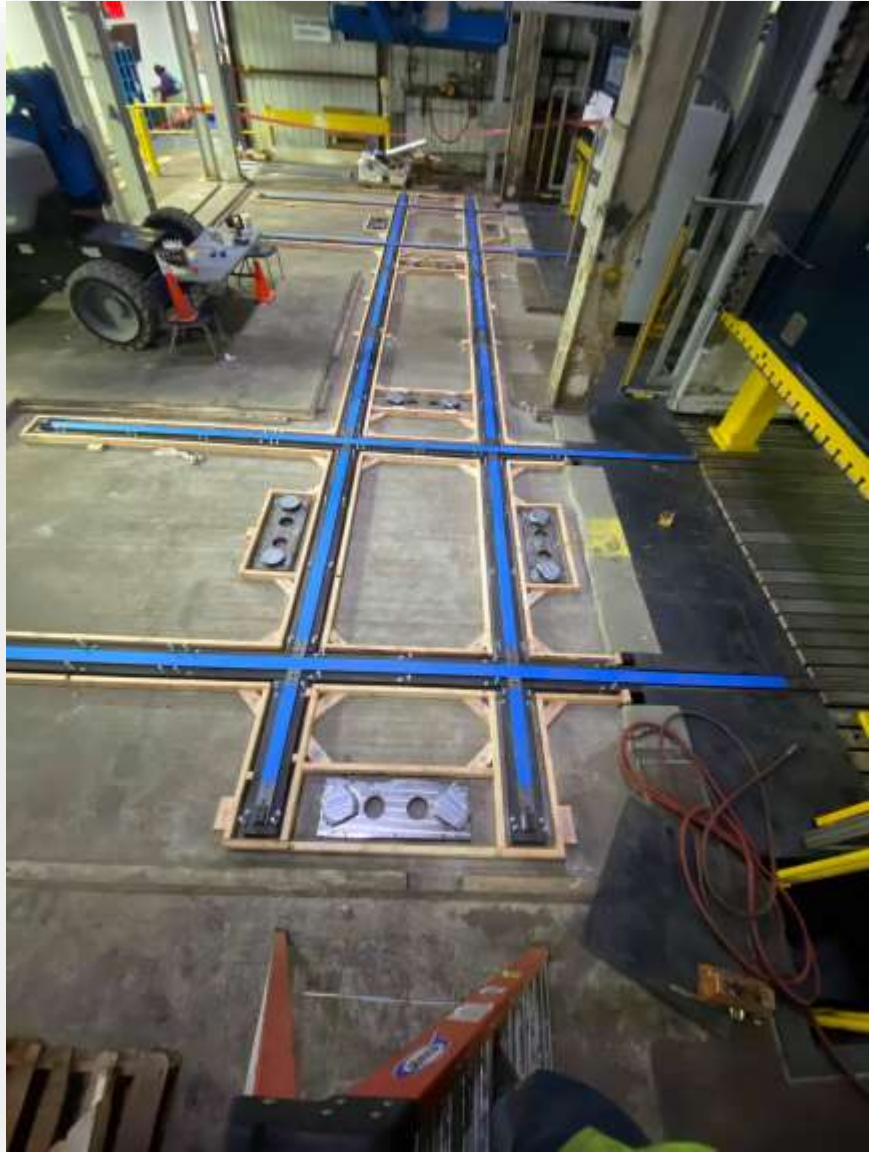
Machinery and Press Setting



Press & Rail Setting, Millwright & Grouting



Bolster Rail Installation



Press & Bolster Rail setting



Vessel - barge and over the road

Houston, TX



South Africa to the pad in Alabama



South Africa to the pad in Alabama





...engineered to move

Aerospace Hardware





...engineered to move

Aerospace Hardware



Steel Plants



Other Projects



Other Projects





...engineered to move

.... and there is always an Antonov....





...engineered to move

THANK YOU!

Contact: +1 (713) 993-7640

sales@atlas-heavy.com

8502 Miller Road 3 | Houston, TX 77049